

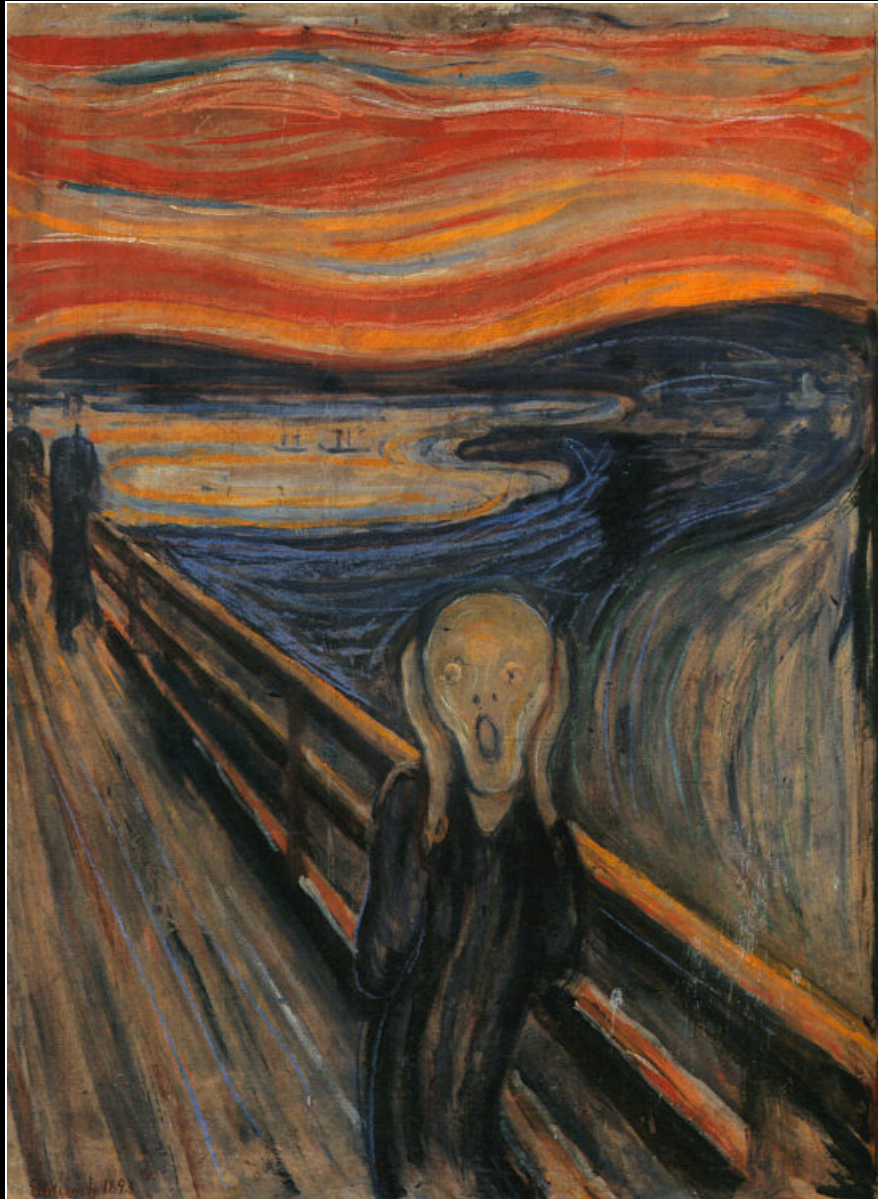
Early Modern Art

Ms. Susan M. Pojer
Horace Greeley HS Chappaqua, NY

Themes in Early Modern Art

1. Uncertainty/insecurity.
2. Disillusionment.
3. The subconscious.
4. Overt sexuality.
5. Violence & savagery.

Edvard Munch: *The Scream* (1893)



Expressionism

- Using bright colors to express a particular emotion.

Franz Marc: *Animal Destinies* (1913)



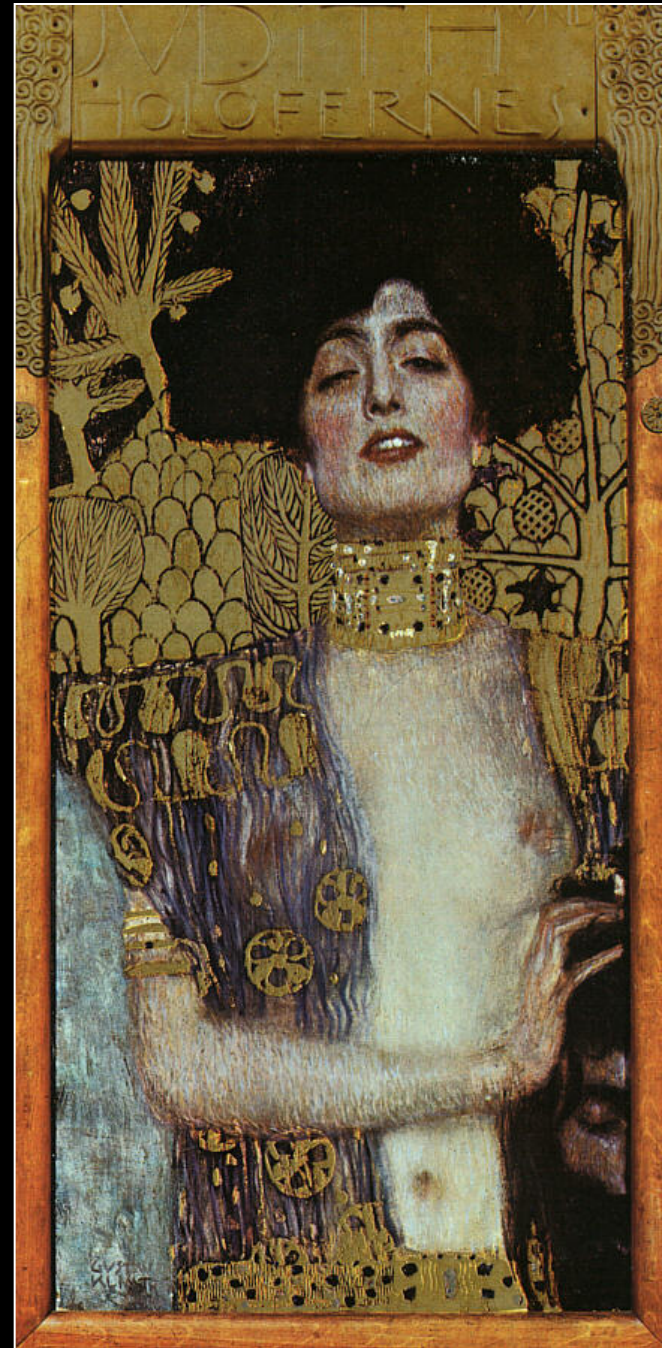
Wassily Kandinsky: *On White II* (1923)



Gustav Klimt: *Judith I* (1901)

Secessionists

- Disrupt the conservative values of Viennese society.
- Obsessed with the self.
- Man is a sexual being, leaning toward despair.



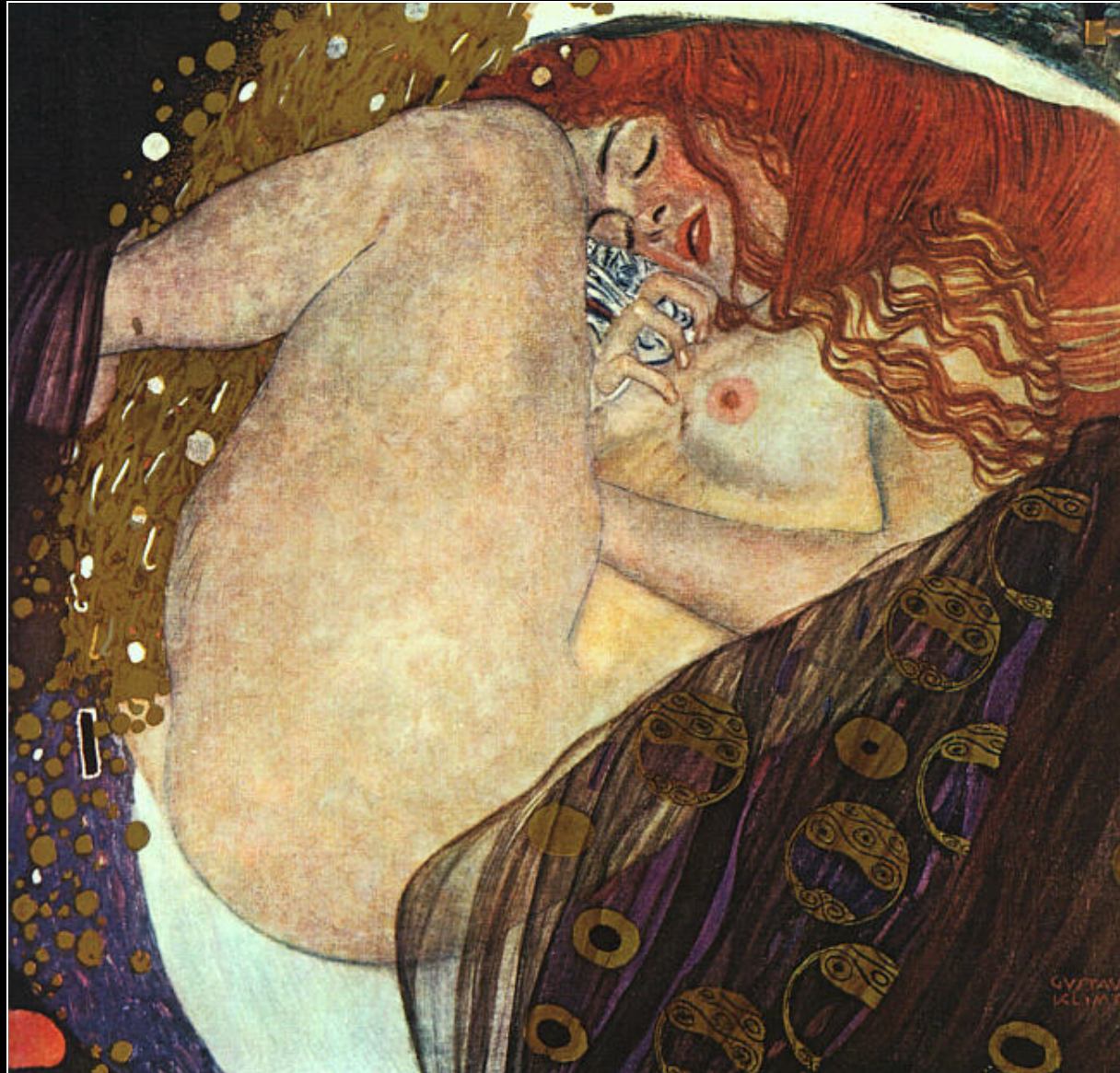


Gustav Klimt:
Wrogie sily
(1901)

Gustav Klimt: *The Kiss* (1907-8)



Gustav Klimt: *Danae* (1907-8)



Georges Braque: *Violin & Candlestick* (1910)



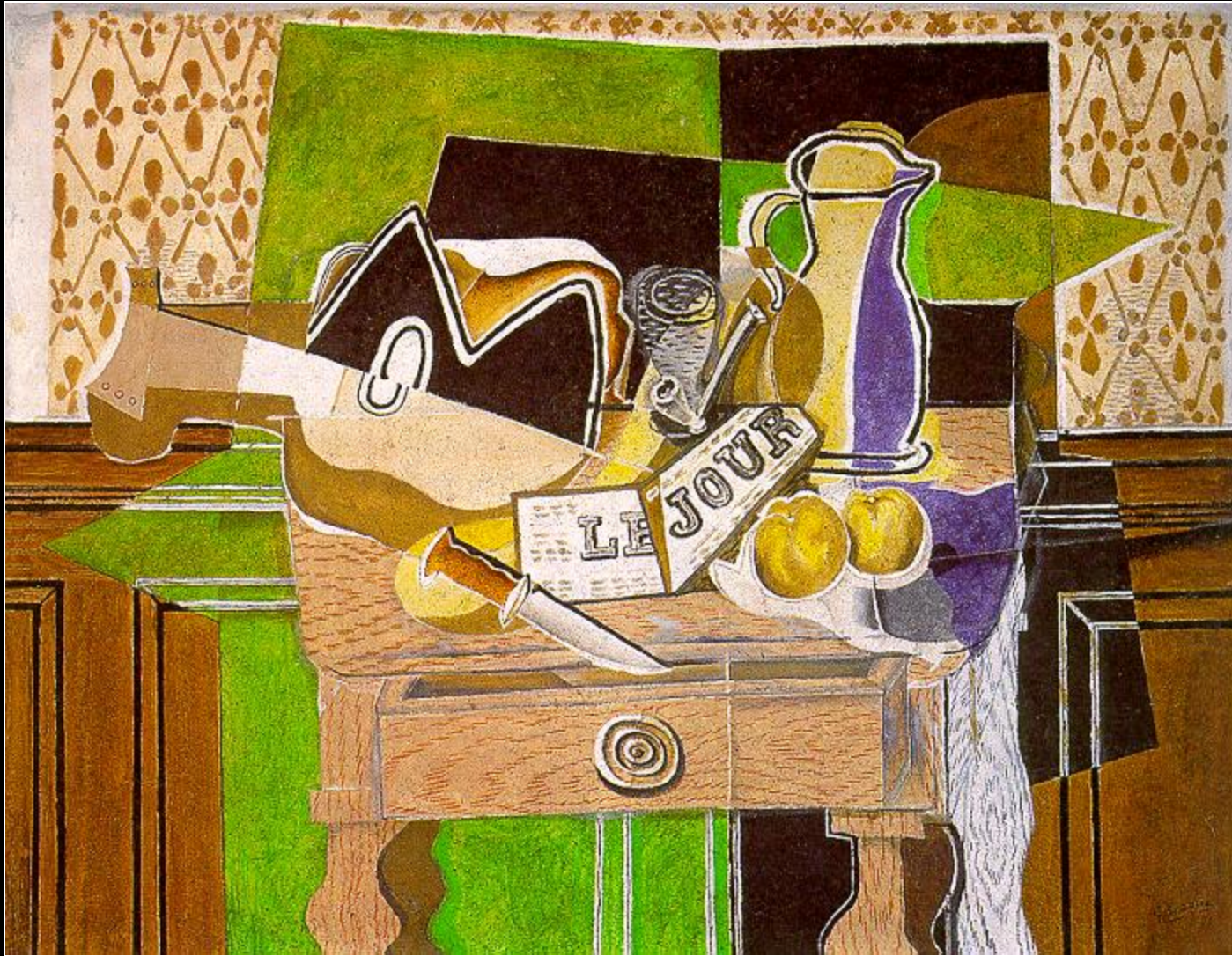
CUBISM

- The subject matter is broken down, analyzed, and reassembled in abstract form.
- Cezanne → The artist should treat nature in terms of *the cylinder, the sphere, and the cone*.

Georges Braque:
*Woman with a
Guitar*
(1913)



Georges Braque: *Still Life: LeJeur* (1929)



Pablo Picasso: *Les Femmes d'Alger* (1907)



PICASSO-GUERNICA-1937



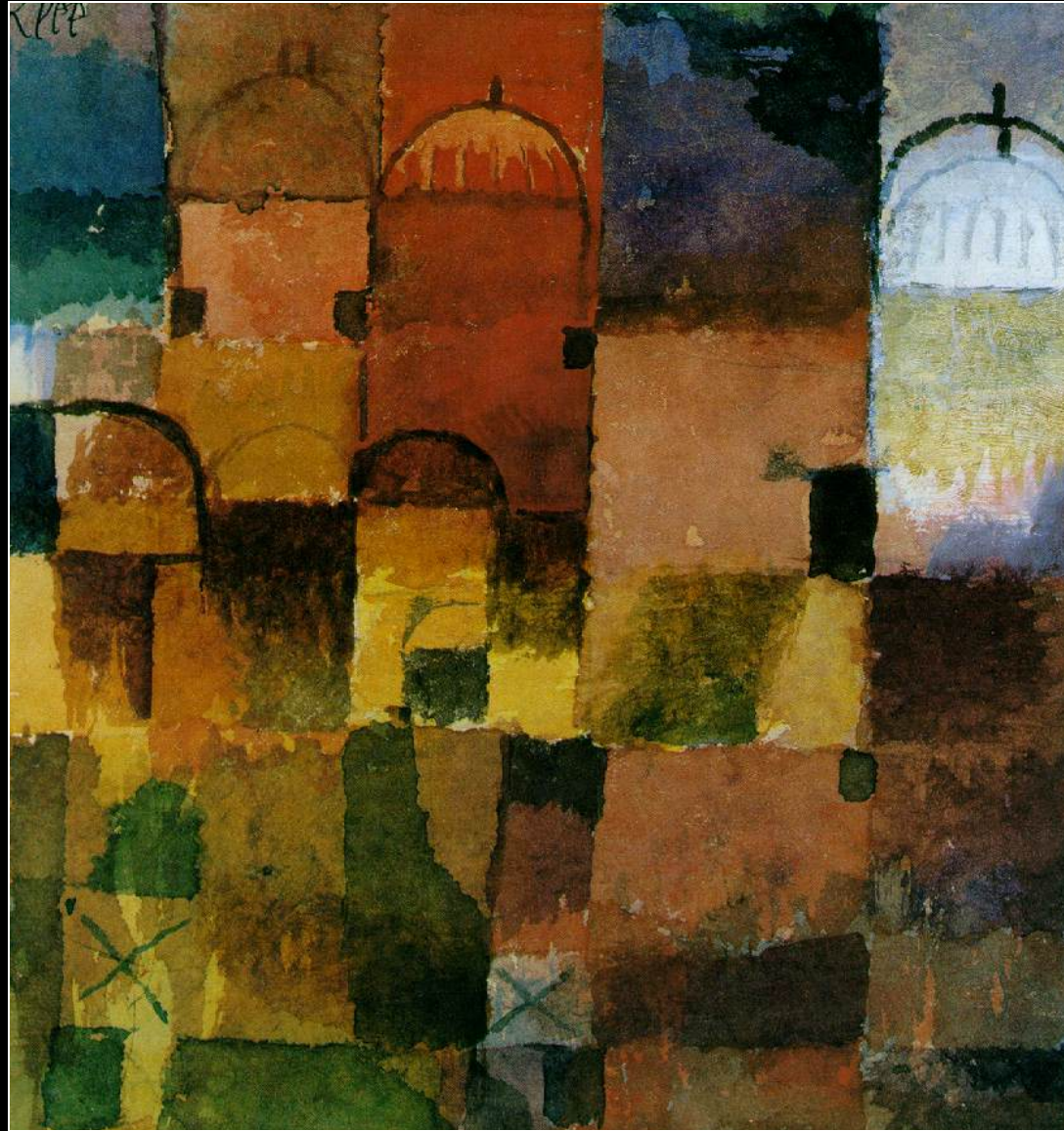
Picasso: *Studio with Plaster Head* (1925)





Pablo Picasso:
*Woman with a
Flower*
(1932)

Paul Klee: *Red & White Domes* (1914)



Paul Klee: *Senecio* (1922)



George Grosz

Grey Day
(1921)

DaDa

- Ridiculed contemporary culture & traditional art forms.
- The collapse during WW I of social and moral values.
- Nihilistic.





George Grosz:
*Daum Marries
Her Pedantic
Automaton*
George in May,
1920, John
Heartfield is
Very Glad of It
(1919-1920)

George Grosz

*The Pillars
of Society*

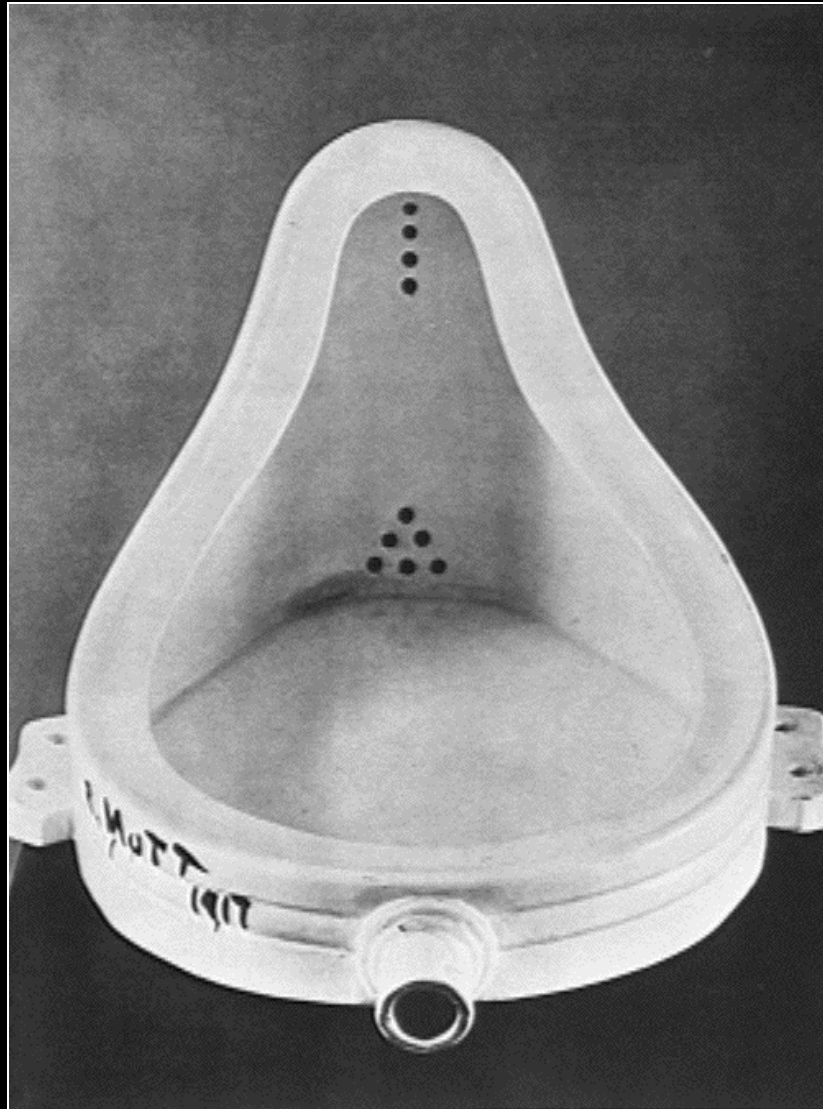
(1926)



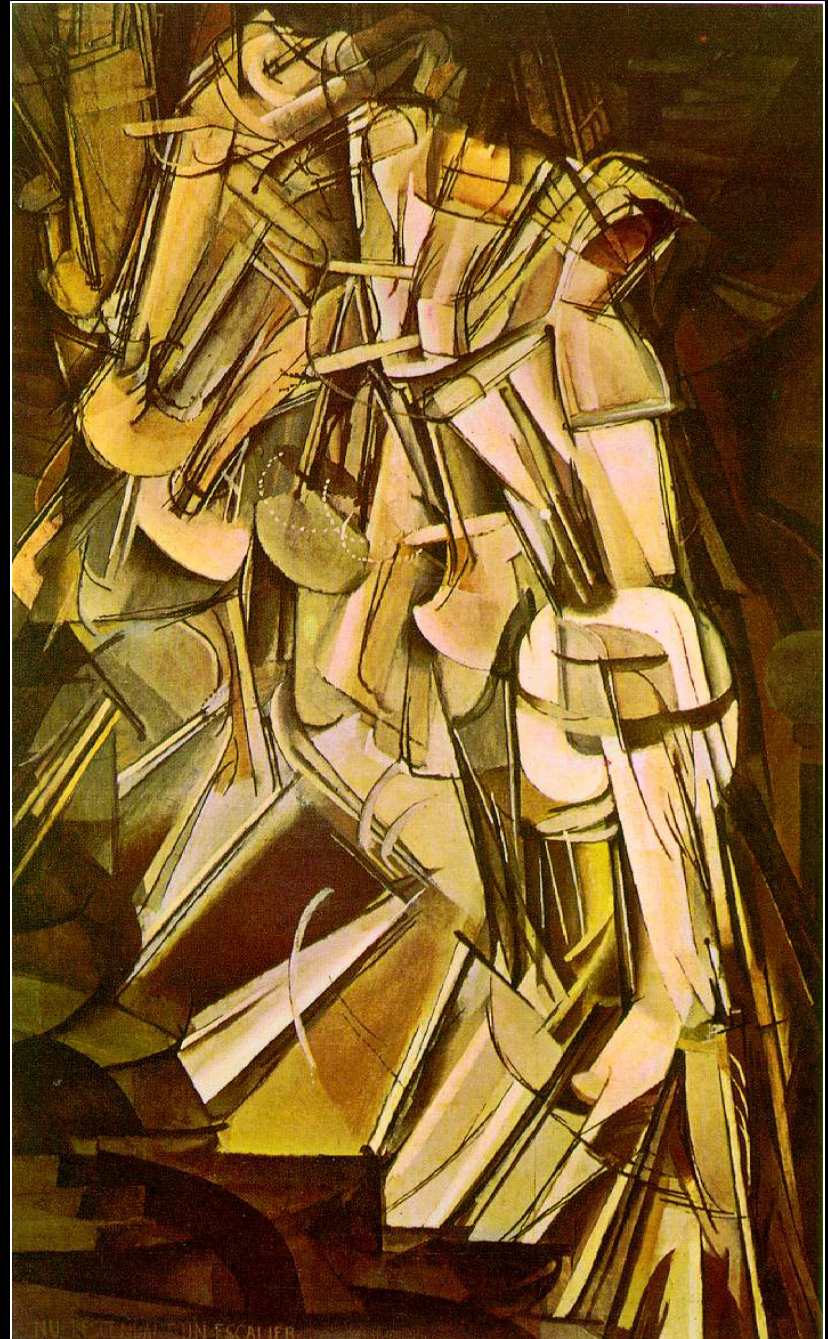
Raoul Hausmann: *ABCD* (1924-25)



Marcel Duchamp: *Fountain* (1917)



Marcel
Duchamp:
*Nude
Descending a
Staircase*
(1912)



Salvador Dali: *Soft Construction with Boiled Beans (Premonition of Civil War)*, 1936



Surrealism

- Late 1920s-1940s.
- Came from the nihilistic genre of DaDa.
- Influenced by Freud's theories on psychoanalysis and the subconscious.
- Confusing & startling images like those in dreams.

Salvador Dali:
The Persistence of Memory (1931)



Salvador Dali: *The Apparition of the Face and Fruit Dish on a Beach* (1938)



Salvador Dali: *Geopoliticus Child*
Watching the Birth of a New Man (1943)



Walter Gropius: Bauhaus Building (1928)

Bauhaus

- A utopian quality.
- Based on the ideals of simplified forms and unadorned functionalism.
- The belief that the machine economy could deliver elegantly designed items for the masses.
- Used techniques & materials employed especially in industrial fabrication & manufacture → steel, concrete, chrome, glass.



Walter Gropius: Lincoln, MA house (1938)



FRANK LLOYD WRIGHT- Robie House. IL-1908-FUNCTIONALISM



FLW-FALLING WATER-1935



FRANK LLOYD WRIGHT- FUNCTIONALISM

